

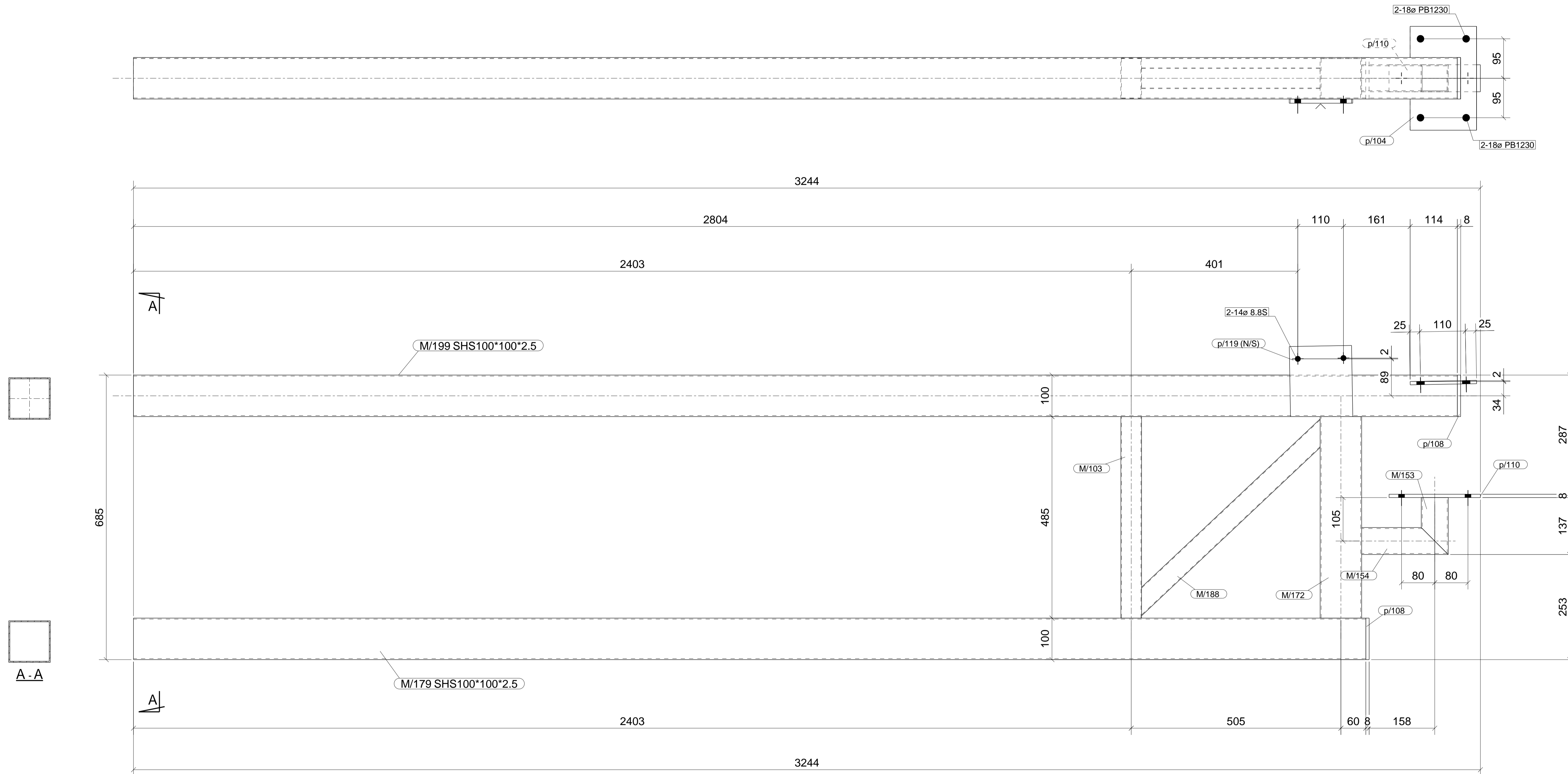


QA CHECKLIST		ASSEMBLY	GRID LOCATION
Fabricator		CF/100	D/4
Date Issued			
Time Start			
Time finish			
Preweld Check			
Final Check			

- GENERAL NOTES**
- HOLES 18 DIA. FOR 8.8S BOLTS UNLESS NOTED.
 - ALL WELDS TO BE 6 CPW, E48XX UNLESS NOTED OTHERWISE.
 - ALL BUTT WELDS TO BE FULL PENETRATION UNLESS NOTED.
 - ALL NOTCHES TO HAVE 10mm RADIUS AT INTERNAL CORNERS.
 - ASSEMBLY MARK TO BE STAMPED ON TOP FACE WHERE INDICATED THUS .
 - THIS SYMBOL  INDICATES CONNECTING FACE OF CLEAT.

SUB-ASSEMBLY REF.	
No.	In Assembly.
1	ALONE



MATERIAL LIST						
ITEM	No.OFF	SECTION	LENGTH	GRADE	WEIGHT(kg)	AREA(m ²)
M/103	1	RHS100*50*1.6	485	350	1.8	0.1
M/153	1	SHS65*65*2.5	137	350	0.7	0.0
M/154	1	SHS65*65*2.5	209	350	1.0	0.1
M/172	1	SHS100*100*2.5	485	350	3.7	0.2
M/179	1	SHS100*100*2.5	2968	350	22.3	1.2
M/188	1	SHS50*50*1.6	638	350	1.5	0.1
M/199	1	SHS100*100*2.5	3188	350	24.0	1.2
p/104	1	FL8*250	160	250	1.7	0.1
p/108	2	FL8*100	100	250	1.3	0.0
p/110	1	FL8*65	220	250	0.9	0.0
p/119	1	FL10*150	171	250	2.0	0.1
TOTAL					60.8	3.2

PHASE	QTY.
1	1

1 COLUMN FRAME[S] REQ'D AS DRAWN MK CF/100
Finish - PRIME PAINTED

REV	DATE	DESCRIPTION
0	28.09.2017	For Construction

CONFIDENTIAL

ASC
Atkins Steelcraft. Pty Ltd
Structural Steel Detailing
Phone: 07 3807 6424

DRAWING TITLE	COLUMN FRAME
CONTRACT	QUILPIE AIRPORT
MODELLED BY	B.A
JOB NUMBER	100
SCALE	1:5

ISSUE DATE	28.09.2017
DRAWING No	SHEET No
CF/100	REV
	0