

QA CHECKLIST

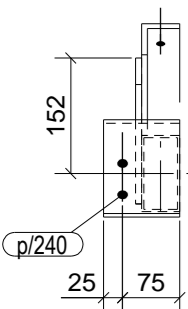
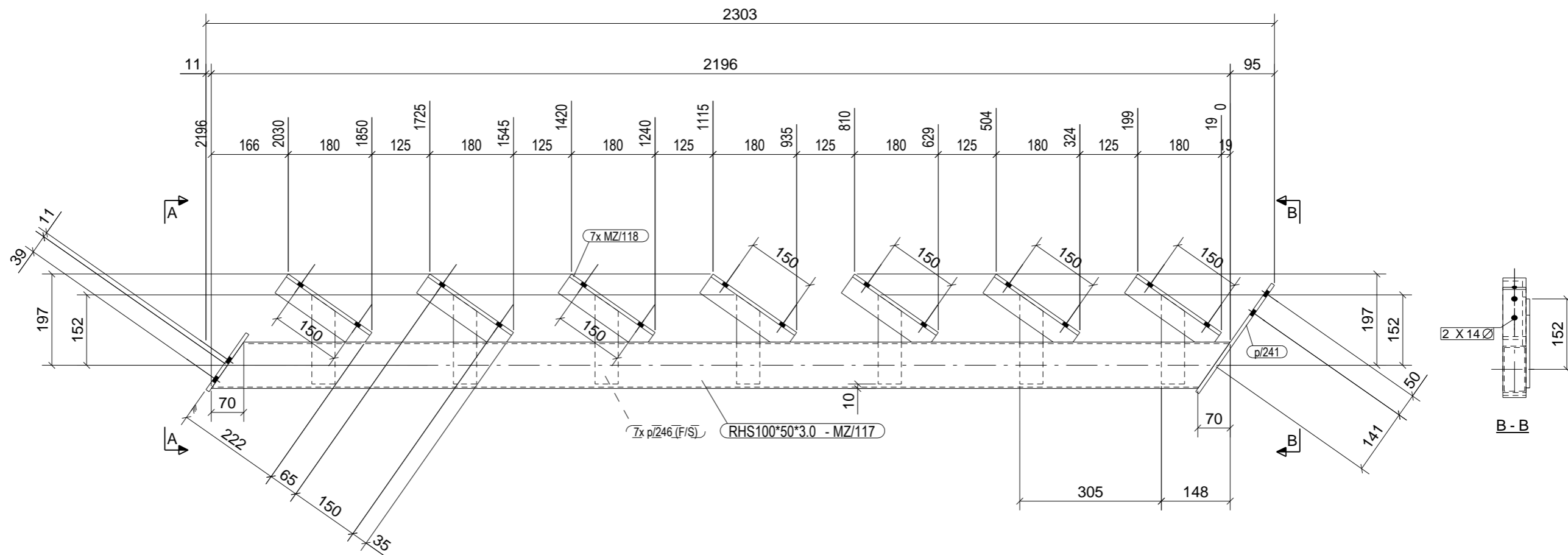
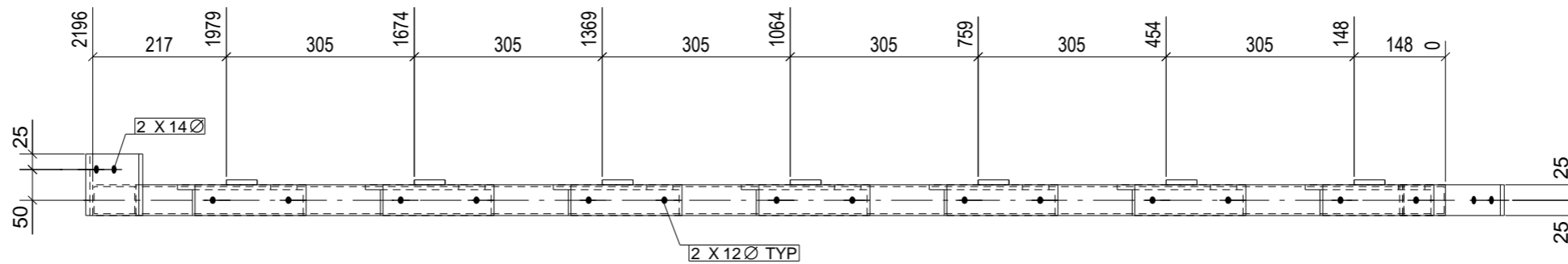
Fabricator	
Date Issued	
Time Start	
Time finish	
Preweld Check	
Final Check	

ASSEMBLY	GRID LOCATION
ST/102	D-E/4-3

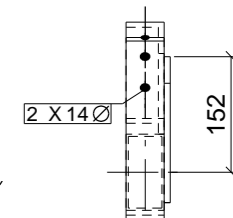
- GENERAL NOTES**
- HOLDS 22 DIA. FOR 8 AS BOLTS UNLESS NOTED.
 - WELDS 6 CFW UNLESS NOTED.
 - ALL BUTT WELDS TO BE FULL PENETRATION UNLESS NOTED.
 - ALL NOTCHES TO HAVE 10mm RADIUS AT INTERNAL CORNERS.
 - ASSEMBLY MARK TO BE STAMPED ON TOP FACE WHERE INDICATED THUS
 - THIS SYMBOL INDICATES CONNECTING FACE OF CLEAT.

SUB-ASSEMBLY REF.

No.	In Assembly.
1	ALONE



A - A



B - B

**1 STRINGER[S] REQ'D AS DRAWN MK ST/102
Finish - PRIME PAINTED**

MATERIAL LIST

ITEM	No.OFF	SECTION	LENGTH	GRADE	WEIGHT(kg)	AREA(m ²)
MZ/117	1	RHS100*50*3.0	2196	350	14.5	0.6
MZ/118	7	EA50*50*8	220	300	8.7	0.3
p/240	1	FL8*100	150	250	0.9	0.0
p/241	1	FL8*50	285	250	0.9	0.0
p/246	7	FL8*50	192	250	3.8	0.1
TOTAL					28.9	1.2

PHASE	QTY.
2	1

1	31.10.2015	For Construction
REV	DATE	DESCRIPTION
CONFIDENTIAL		
ASC Atkins Steelcraft. Pty Ltd Structural Steel Detailing Phone: 07 3807 6424		
DRAWING TITLE	STRINGER	
CONTRACT	Quilpie Shire Depot	
MODELLED BY	B.A.	ISSUE DATE 28.10.2015
JOB NUMBER	132098	DRAWING No
SCALE	1:5	ST/102
		SHEET No
		REV
		1